

FULLERS

DREAM GARDEN

Magazine

August 2025



Welcome,

This month we have the usual advice for you, along with ideas for plants to include in your garden for dryer months and how to entertain the kids in the garden this August.

If you already have a Fullers Garden, then enjoy reading this month's issue in the sunshine. Otherwise, visualise sitting in the middle of your dream garden reading this month's magazine, and when you're ready to bring the garden of your dreams to life, give us a call. We'd love to make your vision a reality.



Ed Fuller
Director of
Fullers Landscaping.



FULLERS
LANDSCAPING

Follow us on:

 @fullerslandscaping

 @landscapinglincolnshire

ADDRESS: 1 Elder Close, Witham St Hughs, Lincoln, LN6 9NS

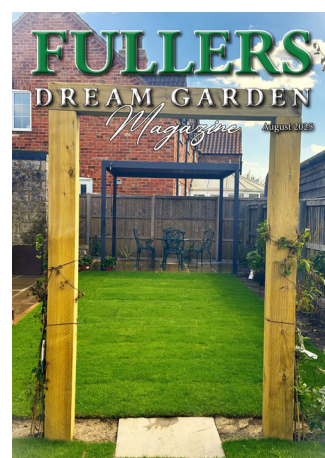
EMAIL: fullerslincolnoffice@gmail.com

PHONE: 01522 868717

WEBSITE: www.landscapinglincolnshire.com

On the cover

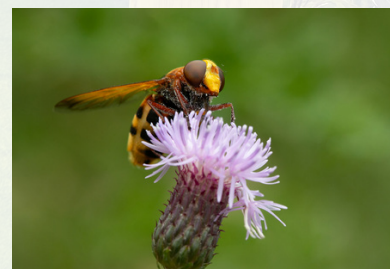
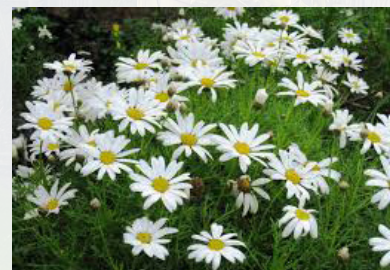
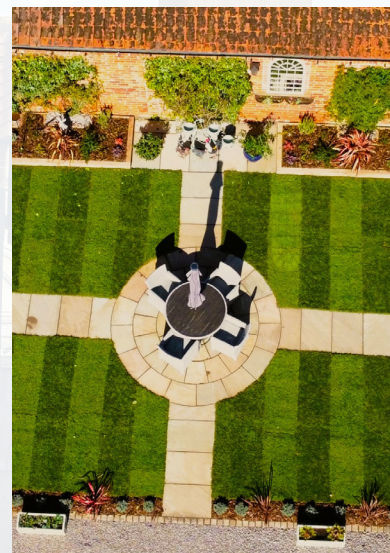
See Page 12



Inside This Issue

August 2025

- 04 Things To Do In The Garden This Month
- 05 What Looks Good This Month
- 07 This Month's Plant Profile
- 09 Creatures And Critters
- 10 Maintenance Matters
- 11 Small Garden Ideas For August Entertaining
- 12 Garden Showcase Of The Month
- 15 Ed's Thoughts!
- 16 Gardens For Kids
- 17 Garden To Kitchen This Month's Recipe
- 18 Monthly Puzzle
- 19 Previous Month's Answers
- 20 Contact Us





Things To Do In The Garden This Month

- Prune Wisteria.
- Deadhead flowering plants regularly.
- Keep watering containers and new plants.
- Feed containers, and even tired border perennials, with a liquid tomato food each week to encourage them to bloom into the early autumn.
- Collect seeds from favourite plants.
- Inspect chrysanthemums for the first signs of white rust and take immediate action
- Harvest sweetcorn and other vegetables as they become ready.
- Continue cutting old fruited canes on raspberries.
- Lift and pot up rooted strawberry runners.
- Most perennial weeds are best dealt with when in active growth. Apply a weed killer containing glyphosate.
- Keep ponds and water features topped up.
- Feed your soil with green manures.

Did You Know?

Wisteria in the UK can live for over 100 years – some of the oldest and largest wisterias in Britain still flower every spring, with stunning cascades of purple blooms. Wisteria sinensis was first introduced to the UK from China in 1816, and today it's a favourite for training over walls and pergolas.

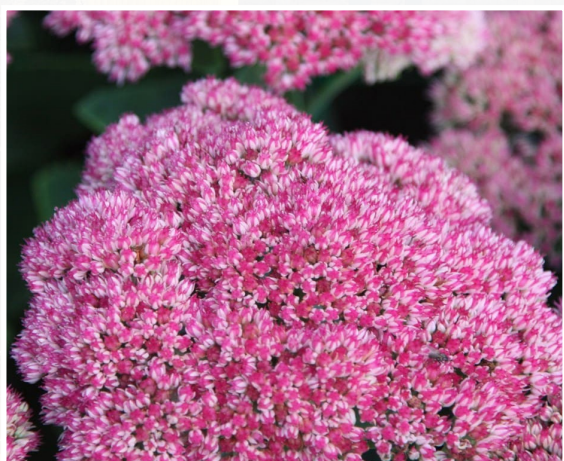
What Looks Good This Month

OUR FAVOURITE PLANTS FROM THE GARDEN



RUDBECKIA

With cheerful yellow petals and dark centres, Rudbeckias bring a golden glow to borders from August into October. Varieties like Rudbeckia fulgida 'Goldsturm' are hardy and reliable.



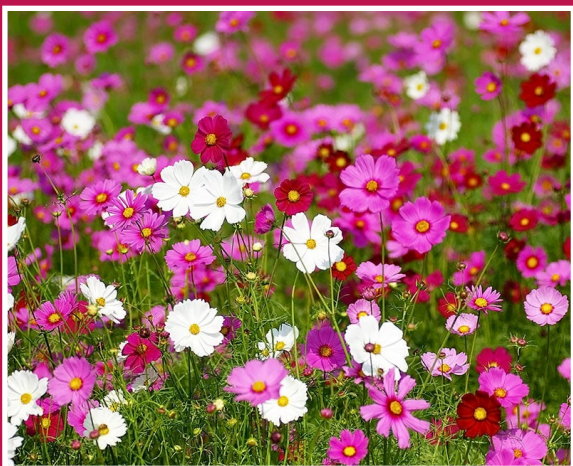
SEDUM

As summer fades, Sedum bursts into domes of dusky pink flowers, providing vital nectar for late-season pollinators. Sedum 'Autumn Joy' is a favourite for its structural beauty.

ECHINACEA

These daisy-like blooms in shades of purple, pink, and white are magnets for bees and butterflies. Echinacea thrives in full sun and well-drained soil, making it perfect for sunny borders and prairie-style planting.





COSMOS

If you've sown Cosmos earlier in the year, they'll now be in full swing, with feathery foliage and delicate blooms in pinks, whites, and purples. Keep deadheading to prolong flowering into autumn.

ZINNIAS

Zinnias love warm weather and reward you with vibrant, jewel-like flowers in reds, oranges, pinks and yellows. Perfect for cutting gardens and pots.



NICOTIANA

For evening gardens, Nicotiana offers fragrant, starry flowers in whites and greens. It also attracts night-flying moths, supporting garden wildlife.

This Month's Plant Profile

HYDRANGEA



Hydrangeas are one of the UK's most popular shrubs, loved for their large, showy blooms and long flowering season from mid-summer into autumn. Perfect for borders, pots and cottage gardens, they bring bold colour just as many other plants begin to fade.

The classic **Hydrangea macrophylla** includes mophead and lacecap varieties with ball-shaped or flat-topped flowers in pink, blue or purple. Their colour is influenced by soil pH – acidic soils turn blooms blue, while alkaline soils create pink tones. For a modern touch, **Hydrangea paniculata** produces elegant, conical blooms that start creamy white and blush pink as they age. Popular varieties

like '*Limelight*' and '*Vanilla Fraise*' are excellent for sunny spots, while **Hydrangea arborescens** '*Annabelle*' dazzles with huge snowball flowers that brighten shaded areas.

Hydrangeas thrive in moist, well-drained soil and prefer partial shade, though paniculatas are more sun-tolerant. Mopheads require little pruning beyond deadheading, while paniculatas can be cut back in spring for bigger blooms.

Versatile and low-maintenance, hydrangeas also provide winter interest with their dried flower heads and shelter for garden wildlife. With their generous blooms and reliable nature, they're a timeless choice for any UK garden.

CARYOPTERIS



Caryopteris, often called Bluebeard or Blue Mist Spirea, is a compact deciduous shrub that brings a welcome splash of colour to UK gardens in late summer. From August into autumn, it produces clusters of vivid blue flowers that are irresistible to bees, butterflies and other pollinators, making it a perfect choice for wildlife-friendly planting schemes.

This low-maintenance shrub thrives in sunny, well-drained spots and is ideal for mixed borders, gravel gardens or as part of a low hedge. Its aromatic grey-green foliage adds an extra sensory dimension and pairs beautifully with warm-toned late-summer perennials like Rudbeckia and Sedum.

Caryopteris is drought-tolerant once established and prefers poor to moderately fertile soil – over-feeding can reduce flowering. In early spring, prune it hard to encourage fresh growth and abundant blooms later in the year. Popular varieties include *Caryopteris* × *clandonensis* 'Heavenly Blue' for its rich flowers and compact habit, and 'Dark Knight' with deeper, inky blue tones.

With its striking colour, compact size, and wildlife appeal, Caryopteris is an excellent addition to any garden looking for late-season interest and easy care.

HEBE

Hebe is a versatile, evergreen shrub that brings year-round structure and summer colour to UK gardens. Native to New Zealand, these compact plants are ideal for borders, containers, and coastal gardens, offering neat foliage and flowers that attract bees and butterflies.

Flowering from late spring into autumn, Hebes produce dense spikes of purple, pink, or white blooms, providing a valuable nectar source for pollinators when other plants begin to fade. Varieties like *Hebe* 'Autumn Glory' and *Hebe* 'Purple Pixie' are particularly popular for their vibrant flowers and compact growth.

Hebes are low-maintenance and thrive in full sun or light shade with well-drained soil. They are tolerant of salt-laden winds, making them excellent for coastal planting, and their neat, rounded forms work well in formal or informal designs. In colder regions, smaller-leaved varieties are generally hardier, while larger-leaved types may need winter protection.

Light pruning after flowering helps maintain shape and encourage fresh growth. Water well in their first season but avoid overwatering once established.

With their evergreen foliage, extended flowering period, and wildlife appeal, Hebes are an easy and rewarding choice for gardeners looking to combine structure and seasonal interest.



Creatures and Critters

BUMBLEBEES

In August, UK gardens are alive with bumblebees making the most of late-summer blooms. At this time of year, worker bumblebees are busy collecting nectar and pollen to support the colony, while new queens are fattening up ready to hibernate through winter. Flowers like lavender, buddleia, and sedum are particularly valuable nectar sources in August, helping sustain these vital pollinators. Providing a mix of late-flowering plants ensures bumblebees can thrive as the season begins to wind down.



BATS

In August, bats in the UK are at their most active, taking advantage of the warm evenings to hunt insects. Pipistrelles, Britain's smallest and most common bats, can be seen darting through gardens and parks at dusk, feeding on moths, midges and mosquitoes. This is also the time when young bats, born earlier in the summer, take their first flights and begin learning to hunt. Leaving ponds, wildflower areas, or night-scented plants like jasmine can help attract insects and provide vital feeding grounds for these fascinating nocturnal mammals.



BADGERS

Badgers are busy foraging to build up their fat reserves for the colder months ahead. They are most active at night, emerging from their setts to search for earthworms, fruits, nuts, and fallen crops like windfall apples. This is also the time when young badgers, born earlier in spring, are fully weaned and learning to forage alongside the adults. Gardens and hedgerows can provide important feeding areas, and leaving areas of wild growth or fallen fruit can support these shy, nocturnal mammals as they prepare for autumn.





Maintenance Matters

Lawn Care in August

Lawn Care in August: Keeping Your Grass Healthy Through Summer

August is one of the warmest months in the UK, and while many gardens are bursting with colour, lawns can begin to show signs of stress. Dry spells, high foot traffic, and even the odd summer downpour can leave grass looking tired. With a little care and attention this month, you can keep your lawn green, healthy, and ready to thrive into autumn.

Mowing in August

Continue to mow regularly, but adjust your approach during periods of hot, dry weather. Raise the cutting height of your mower to 4-5cm to leave the grass slightly longer. This helps shade the soil, retain moisture, and encourages deeper root growth. Avoid cutting too short as this can stress the grass and make it more prone to browning and weed invasion. If your lawn is under drought stress and has stopped growing, hold off mowing until growth resumes after rainfall.

Watering Wisely

Lawns may need extra watering during prolonged dry periods, particularly if you want to maintain a lush green appearance. Water deeply and less frequently – once or twice a week is better than little and often

– to encourage roots to grow downwards where soil retains moisture. Early morning or evening is the best time to water to reduce evaporation. If your lawn browns during drought, don't panic. Most UK grass types are resilient and will green up again once the rain returns.

Feeding Your Lawn

If you didn't apply a summer lawn feed earlier in the season, there is still time in early August. Use a specialist summer fertiliser with lower nitrogen and higher potassium content to toughen the grass and improve drought resistance. Avoid high-nitrogen feeds at this time as they encourage soft, sappy growth that struggles in hot weather.

Repairing Worn Patches

High foot traffic from summer use can create thin or bald patches in the lawn. Rake over these areas lightly to break up the soil surface and, if needed, sow a suitable lawn seed mix in early September when conditions for germination improve.

By following these tips, you can enjoy a healthy, attractive lawn through August and beyond, while setting it up for success in the months ahead.

Small Garden Ideas for August Entertaining

Styling patios, adding scent and colour for late-summer evenings

Warm August evenings are made for outdoor living, and even the smallest garden or patio can become a beautiful space for entertaining. As the days grow shorter, it's all about creating a cosy, colourful and inviting atmosphere where you can relax with family and friends. Here are some simple yet effective ideas to style your space and make the most of late-summer nights.

Add Layers of Light

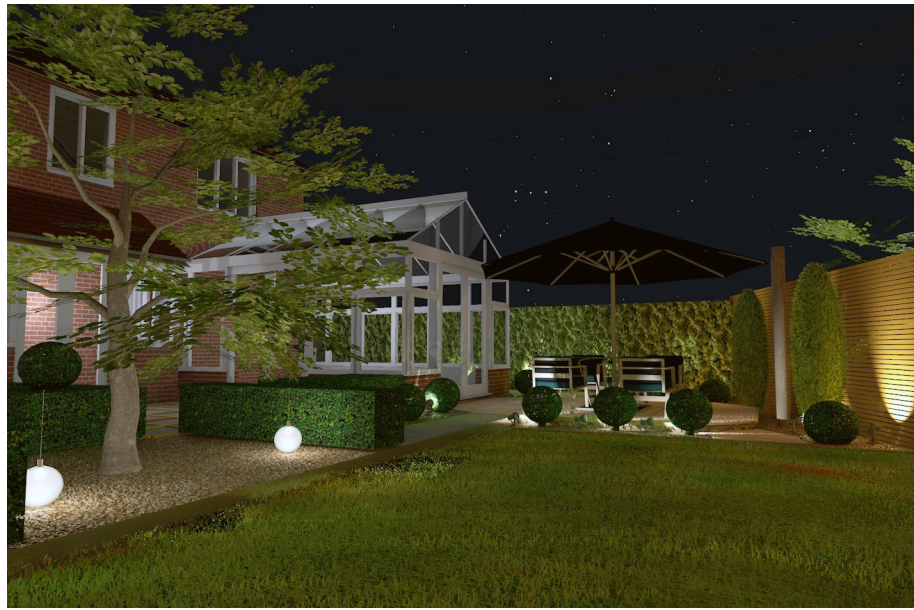
Lighting is key to transforming a small garden after dusk. Use solar-powered lanterns, fairy lights or LED candles to create a warm, welcoming glow. Hang festoon lights overhead to define seating areas or drape them along fences for a magical effect. For added charm, cluster tea lights or hurricane lamps on tables and steps. If you have a wall or trellis, consider adding an outdoor uplighter to showcase climbing plants or features.

Introduce Scent and Colour

Fragrance really comes into its own on summer evenings. Plant or position pots of night-scented flowers near your seating area to release their perfume as the air cools. Good choices include:

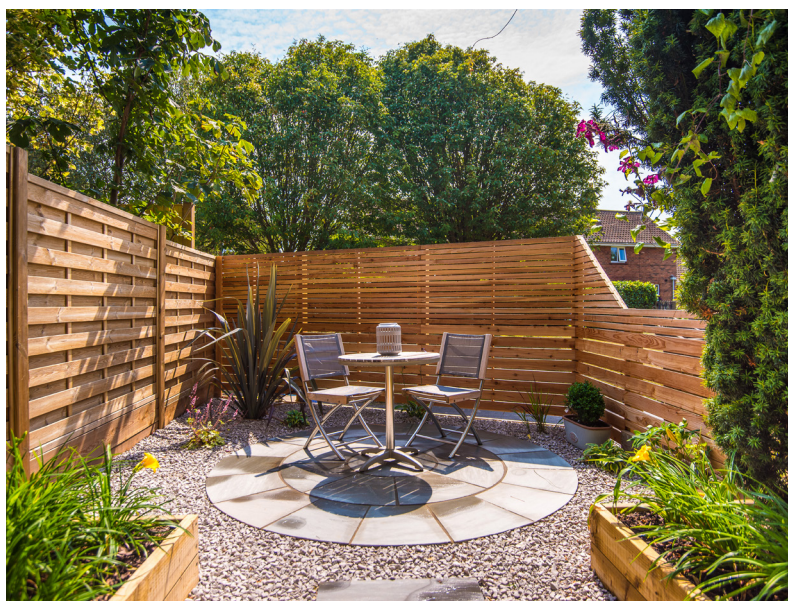
- ♦ **Jasmine (*Trachelospermum jasminoides*)** – a fragrant evergreen climber for walls or trellises.
- ♦ **Nicotiana (*Flowering tobacco*)** – star-shaped blooms that release scent at night.
- ♦ **Lavender** – adds soothing aroma and a touch of Mediterranean style.

For colour, choose plants that thrive in pots and give a long-lasting display. Pelargoniums (scented geraniums), verbena, and fuchsia provide vibrant blooms well into autumn and can be moved around to suit your layout.



Create a Cosy Seating Space

In a small garden, comfort and scale are everything. A bistro set or foldable chairs and table make the most of tight spaces, while floor cushions or a garden bench with scatter pillows invite guests to linger. Add a soft throw to keep warm as the evening cools. If space allows, a fire pit or chiminea not only provides heat but also creates a natural focal point for gatherings.



Garden Showcase of the Month

We get to work on some amazing projects and we thought we would share them with you. They can hopefully provide you with inspiration for your own dream garden.



A Tranquil Escape

Project Years: 2025

Location: Bassingham

Tucked behind a charming brick home, this garden is a thoughtful design, combining soft curves, structured features, and lush planting to create a versatile outdoor space. Designed for both relaxation and connection, it's a place where simple materials meet clever layout, resulting in a garden that feels twice its size.

On entering the space, the eye is drawn along a gentle stepping-stone pathway that leads to a central timber archway. This understated yet impactful feature acts as a visual marker, guiding visitors from one area of the garden to the next and framing views in both directions. Over time, climbing plants will soften its clean lines, blending structure with nature and creating an inviting green gateway.

The design balances open lawn areas with more intimate spaces for seating and planting. A circular sandstone patio forms the perfect stage for an elegant bistro set. Surrounded by gravel and light planting, it's an ideal spot for morning coffee or evening drinks.

Privacy is key in this garden, and the use of horizontal timber slatted fencing provides a contemporary solution. Its natural finish complements the soft landscaping while offering seclusion without feeling heavy. Against this backdrop, carefully selected trees and shrubs have been planted to create height, colour, and seasonal interest. Once mature, they will provide shade and dappled light, adding to the feeling of calm and enclosure.

At the other end of the garden, a pergola introduces a shaded area for dining or lounging. Constructed from powder-coated aluminium, it contrasts beautifully with the timber elements and adds a sleek, modern touch to the overall design. With time, climbing plants and hanging lights could transform it further into a cosy evening retreat.

What makes this garden so successful is the seamless transition between zones. The curved edges of the planting beds soften the straight lines of the hard landscaping, while the mix of materials – from sandstone paving to granite gravel – adds texture and visual interest. The planting scheme itself is a blend of perennials and evergreens, chosen for their low maintenance and year-round appeal.



This garden has been designed to evolve with time. As plants mature and timber structures weather naturally, the space will only grow in character and charm. It's a space that encourages you to pause, to wander, and to enjoy the outdoors at any time of day.

Whether you're following the stone path barefoot across freshly mown lawn or enjoying a glass of wine under the pergola, this garden delivers a sense of calm and belonging that makes it more than just an outdoor space – it's a sanctuary.



Ed's Thoughts!

Plants for Dry Months: Drought-Tolerant Choices for UK Gardens

With hotter, drier summers becoming more common in the UK, choosing plants that can thrive with minimal watering is a smart way to future-proof your garden. Drought-tolerant plants not only save time and effort but also help create beautiful, resilient borders that cope well in dry spells.

The key to success is selecting species that naturally tolerate poor, dry soils and storing water in their roots, stems, or leaves. Mediterranean-style plants are a great choice, as they're adapted to hot summers and less frequent rain.

Perennials and Shrubs

- ♦ **Lavender (*Lavandula angustifolia*)** – Loved for its fragrant purple flowers and silvery foliage, lavender thrives in full sun and well-drained soil.
- ♦ **Rosemary (*Rosmarinus officinalis*)** – Both ornamental and edible, rosemary is hardy and drought-resistant once established.
- ♦ **Erysimum 'Bowles's Mauve'** – This perennial wallflower produces vibrant purple blooms for months and tolerates dry conditions well.
- ♦ **Cistus (Rock Rose)** – A low-maintenance shrub that produces delicate, papery flowers and loves poor soils (pictured)



Ornamental Grasses

- ♦ **Stipa tenuissima (Mexican feather grass)** – Adds movement and texture to dry borders.
- ♦ **Festuca glauca (Blue fescue)** – Compact, drought-tolerant grass with striking blue foliage (pictured)



Ground Cover Plants

- ♦ **Sedum (Stonecrop)** – Succulent leaves and clusters of late-summer flowers make this a drought-tolerant favourite.
- ♦ **Thyme (*Thymus vulgaris*)** – Perfect for filling gaps between paving stones and releasing fragrance when stepped on.

To help these plants establish, water them well during their first season and improve drainage by adding grit to heavy soils. Once settled, they'll cope with dry periods far better than thirstier alternatives. By planting with drought in mind, you can enjoy a garden that looks beautiful, supports pollinators, and stays healthy even in the hottest UK summers.

Gardens for Kids:

Making the Most of Summer at Home

The school summer holidays can feel long when you're trying to keep children entertained, but your own garden can be the perfect place for fun, creativity, and family time. With a few simple ideas – and the right garden design – you can turn your outdoor space into a haven that keeps little ones happy all summer long.

Gardens are natural playgrounds. Open lawns offer plenty of room for running, football, and picnics, while stepping stones and winding paths encourage children to explore and play. Even small gardens can be transformed with a mud kitchen, a simple scavenger hunt, or a shaded corner for a homemade den.

For budding gardeners, a “kids’ garden” is a great idea. Raised beds or pots are perfect for growing sunflowers, strawberries, or herbs. Fast-growing plants like radishes give quick results and teach children about nature in a hands-on way. Wildlife features add another layer of interest. A bug hotel, bird feeder, or bee-friendly flower patch will attract insects and birds, helping kids learn about the creatures that share their garden.



On hotter days, water play is always a hit. A sprinkler, paddling pool, or even a bucket and sponges can provide hours of fun. For younger children, shallow rills or hand pumps (with safety in mind) can be a permanent feature of a family-friendly garden design.

As evening falls, the garden transforms into a more relaxed space. Family barbecues, stargazing on a blanket, or even camping out under the stars all make for memorable holiday moments.



When designing gardens for families, it's worth thinking about spaces that grow with your children. Play bark areas and sandpits can later be swapped for outdoor dining zones, while features like pergolas and raised beds provide structure and interest for all ages.

This summer, your garden doesn't have to be just a backdrop. With thoughtful design and a little imagination, it can become the centre of family life – a safe, inviting place where children can play, learn, and create lasting memories

Garden to Kitchen

This Month's Recipe

PLUM CAKE

Serve this hearty fruit sponge with a dollop of something creamy- it would also work with raspberries instead of plums

Ingredients

- Butter for greasing
- 2 tbsp demerara sugar
- 500g plum

For the cake

- 175g butter
- 175g dark muscovado sugar
- 140g golden syrup
- 2 eggs beaten
- 200ml milk
- 300g self-raising flour
- ½ tsp bicarbonate of soda
- 1 tbsp ground ginger
- 1 tsp mixed spice



Method

STEP 1

Heat oven to 180C/160C fan/gas 4. Grease and line the base of a 23cm square cake tin with baking parchment. Butter the paper generously and sprinkle with the demerara sugar. Halve the plums and arrange in the base of the tin in 1 layer, cut-sides down.

STEP 2

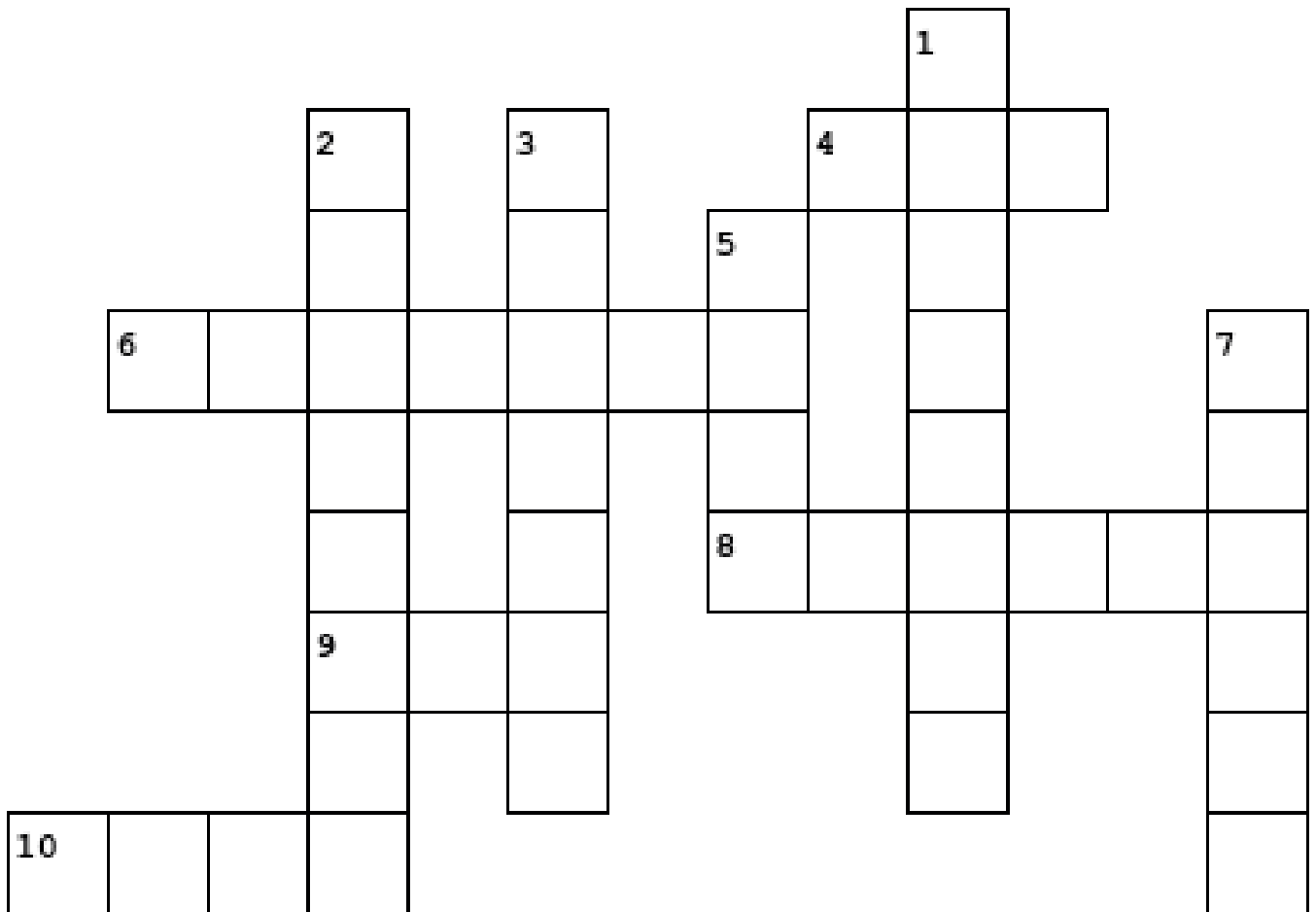
For the cake, melt the butter, muscovado sugar and syrup in a large pan over a low heat, stirring until smooth. Cool for 10 mins, then stir in the eggs and milk. Sift in the flour, bicarbonate of soda and spices, then mix to a smooth batter.

STEP 3

Pour the batter into the tin, over the plums, and bake for 45-55 mins until firm to the touch. Cool in the tin for 10 mins, then turn out onto a wire rack and leave to cool. Will keep in the fridge, wrapped in baking parchment and foil, for up to 5 days.

Monthly Puzzle

CAN YOU WORK OUT THESE 10 WORDS ASSOCIATED WITH SUMMER?



Across

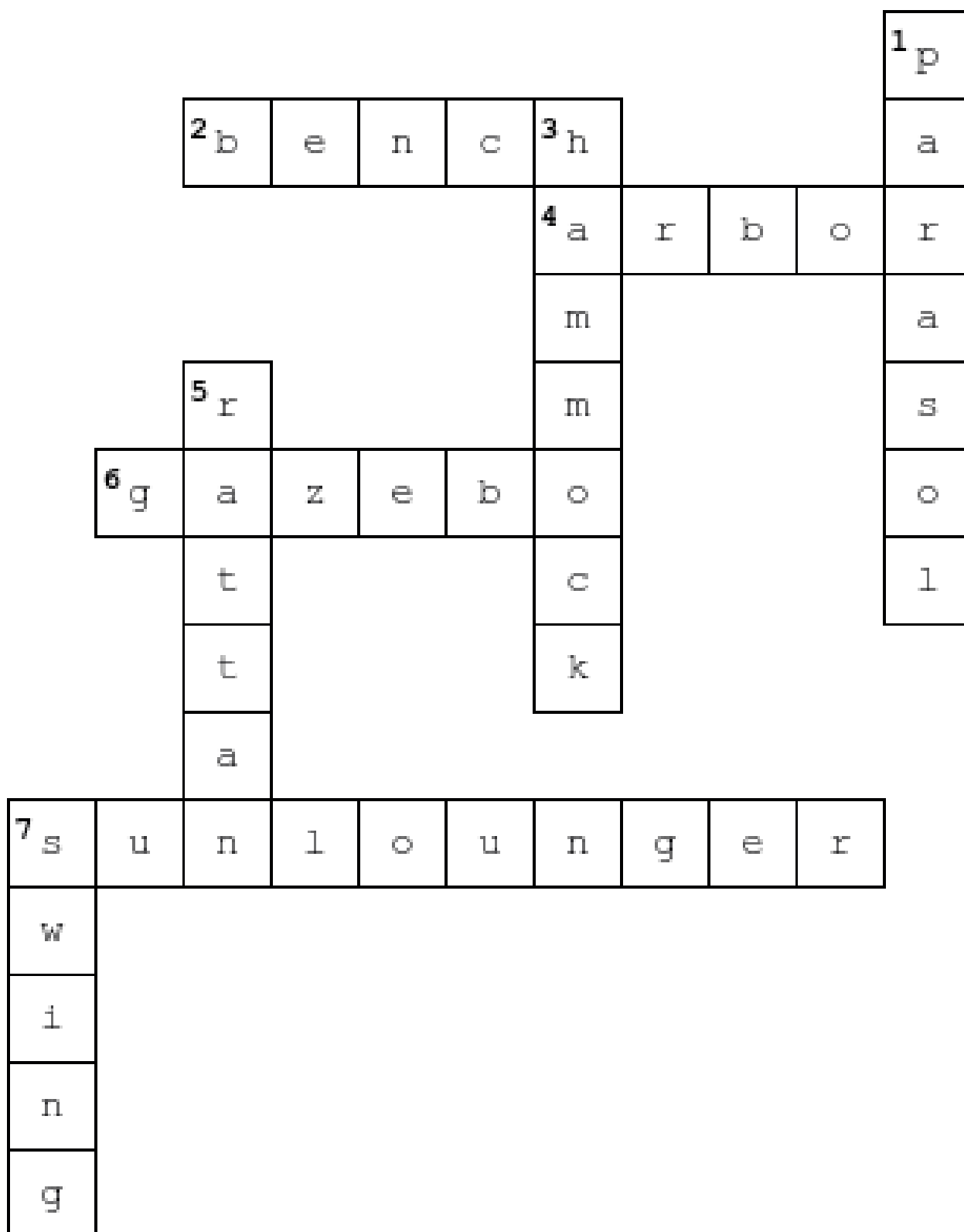
- 4. Clothing item essential for sun protection
- 6. Garden structure offering shade in summer
- 8. Open-air meal often enjoyed in parks and gardens
- 9. Frozen treat to cool down on a hot day or cool your drink
- 10. Seasonal drink made with fruit and lemonade

Down

- 1. Essential summer garden item for outdoor cooking.
- 2. Summer flowers often used in hanging baskets
- 3. Popular garden game played with mallets
- 5. Summer bug known for buzzing around barbecues
- 7. Garden furniture often used for lounging

* ANSWERS WILL BE IN NEXT MONTH'S MAGAZINE


Previous Month's Answers




HERE ARE THE ANSWERS FOR JULY'S CROSSWORD


Contact Us

If you are looking for a landscaper who can transform your garden, get in touch with Fullers Landscaping now.


 01522 868717

 landscapinglincolnshire@gmail.com

You can also find us on social media

 <https://www.facebook.com/fullerslandscaping>

 <https://www.instagram.com/fullerslandscaping>

 <https://www.youtube.com/@fullerslandscaping>

Registered Company Number: 11493946

Name: Fullers Landscaping Limited

Address: 1 Elder Close LINCOLN LN6 9NS

“

We began with a garden that was lifeless and that we hadn't used for over 10 years. With the vision and creativeness from Fullers Landscaping we have an outstanding area for parties along with an imaginative side area with a rockery planted area which is ideal to sit out for a morning coffee.

We have been extremely impressed with the streamline service which meant we could do our day jobs without any hassle as the project was fully managed by them.

Huge thanks to all the team and we look forward to seeing you again in the spring to bring your other ideas to life!

”