



# FULLERS

## DREAM GARDEN

*Magazine*

February 2024



# Welcome,

## Spring is Coming . . .

Spring just around the corner. When you want to utilise this spring at its best, the right time to start the preparation is during the winter season. In this issue, we give you 5 ways to plan ahead for Spring. Follow our 5 ways and see how it helps you with your garden in 2024.

By planning ahead of spring, you can get a head start on your new gardening year and enjoy a lush garden with your baby plants. And this month's issue goes into why maintenance matters and looks at attractive drainage solutions. Finally, with Valentine's day coming up, check out our article on longer lasting love!

When you've been thinking about creating your dream garden . . . Simply give our amazing team a call.



**Ed Fuller**  
Director of  
Fullers Landscaping.



**FULLERS**  
**LANDSCAPING**

*Follow us on:*

**f** @fullerslandscaping

 @landscapinglincolnshire

**ADDRESS:** 1 Elder Close, Witham St Hughs, Lincoln, LN6 9NS

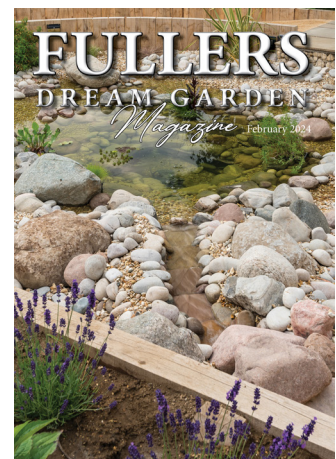
**EMAIL:** fullerslincolnoffice@gmail.com

**PHONE:** 01522 868717

**WEBSITE:** www.landscapinglincolnshire.com

## On the cover

**See Page 14**

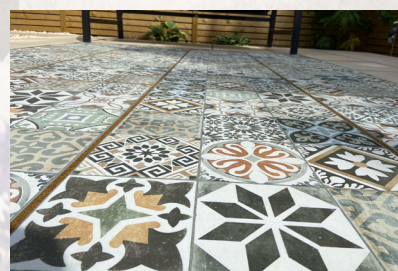
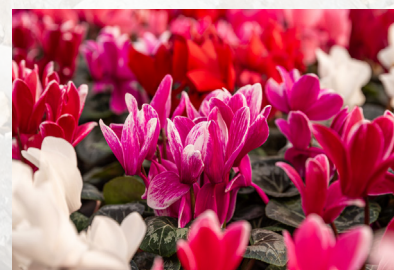




# Inside This Issue

## February 2024

- 04 Things To Do In The Garden This Month
- 05 What Looks Good This Month
- 07 This Month's Plant Profile
- 09 Creatures And Critters
- 11 5 Ways To Plan Ahead For This Spring
- 12 The Best Climbing Plants For Your Pergola
- 14 Garden Showcase Of The Month
- 17 Ed's Thoughts!
- 18 Maintenance Matters
- 19 Longer Lasting Love
- 21 Garden To Kitchen This Month's Recipe
- 22 Monthly Puzzle
- 23 Contact Us







# Things To Do In The Garden This Month

- Divide bulbs such as snowdrops
- prune hardy evergreen hedges and renovate overgrown deciduous hedges.
- Use a pressure washer to clean paths, steps, paving and patios
- Plant colourful, evergreen Phormium 'Cream Delight' in a patio pot to brighten winter displays Prune Wisteria
- Take care not to walk over borders or on lawns where spring bulbs and flowers will be emerging
- Prune Conservatory climbers
- Prepare vegetable beds and sow some vegetables undercover
- Prune winter-flowering shrubs that have finished flowering
- Protect blossom on apricots, nectarines and peaches

## Did You Know?

Before we adopted the Latin name for our second month, Old English used far more vibrant names to describe the month now known as February. The most common Old English name was Solmonath, which literally means “mud month.” A lesser-used term was Kale-monath, which meant “cabbage month.” Perhaps, the medieval English were eating a lot of cabbage or Kale in February



# What Looks Good This Month

## OUR FAVOURITE PLANTS FROM THE GARDEN



### GARRYA ELLIPTICA

Male forms of *Garrya elliptica* are impressive plants when laden with their long elegant tassels in winter and early Spring. *Garrya elliptica* 'James Roof' is the most popular variety because its tassels are much longer than the species, up to 30cm long and lasting for many weeks.



### CAMELLIA 'ELEGANS'

This is a very popular late winter-flowering shrub. *Camellia* 'Elegans' has beautiful deep pink double flowers that look spectacular when the rest of the garden is still in the depths of winter. All camellias need neutral or acid soil, so use ericaceous compost when planting in a container.

### CHAENOMELES

Japanese quince, an edible ornamental that flowers around this time of year, will later produce fruits much like a true quince. Its perfumed fruits make wonderful jams, jellies, fruit leathers and lemonade.







## HELLEBORE

Low-growing, deeply cut leathery foliage will provide year-round interest at the front of a partially shaded bed or woodland floor. From mid-winter to early spring, sturdy stems carry white, pink, even almost black flowers depending on the variety.

## MAHONIA

Slender spikes of bright yellow flowers appear from November to March, above rosettes of large, dark green, holly-like leaves. The flowers of this lovely, upright, evergreen shrub have a fragrance reminiscent of lily-of-the valley, and seem to glow in the wintry sunlight.



## WINTER HONEYSUCKLE

*Lonicera fragrantissima* is a delightful winter-flowering shrub bearing fragrant, cream-white flowers on almost leafless branches. These are sometimes followed by dull-red berries. The flowers are a magnet for winter active bumblebees.



# This Month's Plant Profile

## OPHIOPOGONS PLANISCAPUS NIGRESCENS

Commonly known as Lilyturf or Black Grass, this is an extraordinary-looking plant with its purple-green, evergreen leaves that turn jet black when grown in full sun and very well-drained soil. It looks fantastic with other grasses, especially if grouped in tubs or planted into gravel. It is very slow growing and spreading, but in time produces dense colonies. In summer, small spikes of bell-shaped, pale mauve flowers appear, followed by spherical, dark inky- blue fruit.

It's a very low growing habit and can easily get lost in a border if not positioned well. Ophiopogon look great at this time of year next to snowdrops. The black strappy leaves really are a great foil for bold, bright and brash flowers or caramel coloured leaves, such as those of Heuchera. An ideal plant for under-planting specimen shrubs such as Witch Hazel or Dogwood, where the small mounds of Black Grass can perform undisturbed, creating a carpet of dense colour either in open borders or in containers. Although slow to establish it is very tolerant of all aspects except heavy shade, and all soil types, so don't be tempted to mistake its slow performance for it being in the wrong place!





## CYCLAMEN COUM



A delightful tuberous perennial providing colour often when little else is flowering, particularly in late winter or early spring. Cyclamen coum flowers from January and is a useful complement to snowdrops, winter aconites and other early spring flowering bulbs with their marbled leaves and brightly coloured flowers. Cyclamen Coum is not for the very driest soils, but thrives under trees and will grow even in short grass. If you have heavier soils, work in some grit and leaf mould to help them out.

## CORNUS MAS CORNELIAN CHERRY

An undemanding and reliable shrub or multi-stem small tree providing a very long period of interest. This small growing, compact tree has small bright yellow flowers that appear in February with the bare stems putting on a stunning display of colour in an otherwise gloomy month of the year. Cornus mas flowers open earlier than those of Forsythia. While Cornus mas flowers are not as large and vibrant as those of the Forsythia, the entire plant can be used for a similar effect in the landscape. The fruits, when ripe on the plant, bear a resemblance to coffee berries and ripen in mid- to late summer. The fruit is edible, as used in Eastern Europe and the UK, but the unripe fruit is astringent. When ripe, the fruit is dark ruby red or a bright yellow. The acidic flavour to its fruit is best described as a mixture of cranberry and sour cherry,



## URTICA DIOICA COMMON NETTLE

Nettle leaves are a surprisingly versatile ingredient and are reputed to be a great super food that's rich in iron and vitamins A, C and K as well as packed with vital minerals. However, once it is processed into a supplement, dried, freeze-dried or cooked, stinging nettle can be safely consumed. New growth usually begins to appear in early February. Just remember to avoid roadside and pesticide-ridden areas. Give nettle teas a go next time you're weeding!







# Creatures and Critters

## YOUR GUIDE TO ENCOURAGING AND CARING FOR WILDLIFE IN YOUR GARDEN

Winter is the best time for bare root tree and hedge planting, but you need to choose a day when the ground is not frozen! Mixed native hedging is great for our wildlife. Choices such as Hawthorn and Holly will provide berries for birds in winter as well as places to nest in the spring. If you want to help our wildlife, but like a bit more of a formal hedge there are still many options that can work. Hedging choices such as a Beech or Hornbeam can look very formal if clipped, just be mindful to avoid nesting birds. The safest time to trim hedges is between August and March. Remember that any hedge will offer nesting and feeding opportunities.



# WOODPECKERS

The great spotted woodpecker's striking black and white plumage and noisy, resonating 'drumming' is instantly recognisable on a woodland walk.

Drumming is most intense between late January And April and you are more likely to hear it at this time of year. Great spotted woodpeckers chisel into trees to find food or excavate nest holes. They are well equipped to deal with the hammering blows required to claim their territories in winter. Their skulls are cushioned by a matrix of minute pockets of air, supported by strengthened bone tissue.



# STARLINGS



Britain's starlings congregate in their thousands at winter roosting sites, usually marshes or reedbeds but also man-made structures, throughout the coldest months of the year from November to March. However, before they settle down for the night, vast numbers of them often perform great swirling movements in the sky, creating thrilling ribbon-like images, known technically as murmurations. A murmuration of starlings is a remarkable wildlife spectacle to witness if you're fortunate enough. This remarkable act is thought to be done to deter predators.



# 5 Ways TO PLAN AHEAD FOR THIS SPRING

If you want to utilize this spring at its best, the right time to start the preparation is right during the winter season. Follow our 5 ways and see how it helps you with gardening.

Spring is just around the corner and soon you'll be soon busy sowing seeds, growing plants, and nurturing your garden as it would be the time of the year when it comes back to life. By planning ahead of spring, you can get a head start on your new gardening year and enjoy a lush garden with your baby plants.

## How to Plan Ahead of Spring?

Here are five quick ways you can plan ahead of the spring season to see your dream garden.

### 1. Clean Your Greenhouse

If you have a greenhouse, you know its importance, no need to brag about it. Well, this is the best time to give your greenhouse a deep clean and prepare it for the cuttings and seedlings of the summer. From the outside, wash it with a good detergent or disinfectant and remove grime, moss, and algae. It will allow more light to get in the house during the growing season.

### 2. Sow Seeds That Need a Longer Season

If you are planning to grow any plants that have a longer growing season, you can start sowing their seeds in January and February. However, you may need to start them in a heated propagator or anything similar to ensure healthy growth.

### 3. Start Rain Harvesting

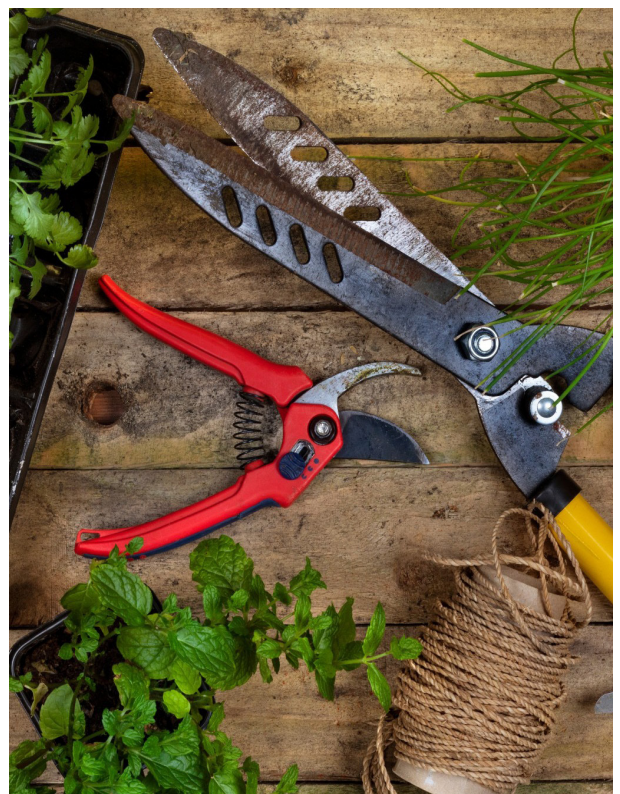
One of the main requirements of your garden is water. This winter, install a water butt in your garden and make the most of the rainfall. Harvesting rainwater promotes environment friendly gardening. Moreover, it is the best type of water for your plants. Rainwater is especially good for rhododendrons and blueberries.

### 4. Get your Gardening Tools Ready

Prepare your gardening tools ready during the colder months - clean and sharpen them. Maintaining gardening tools will preserve them allowing you to save money in the long run. It also helps in preventing diseases.

### 5. Prepare a Composting Area

To make your gardening experience more nature-friendly, prepare a composting area in your garden. You can either buy a ready-to-use composite bin or make one on your own using spare wood. Dump all your organic waste there and get an enriched nutrient source for your green buddies.





# The Best Climbing Plants

## FOR YOUR PERGOLA

Pergolas are one of the most beautiful structures you can add to your garden. You can use them numerous ways for whatever you want - a party space, a dining area, or just a place where you can spend your lazy evenings reading a book. However, if you would like to give your pergola a little privacy, adding plants is the best way to do so. The good news is there are a lot of climbing plants that you can grow on your pergola making it more attractive. These plants will cover your pergola and they are easy to take care of as well.

### Plants to Grow On Your Pergola

Here is a list of plants that you can use to grow on a pergola adding privacy and beauty to it together...

#### Clematis

This is an easy-to-grow, colourful, relatively lightweight, and beautiful climber. It is popular among homeowners because of its characteristics. In early spring, it starts blooming. If you like to give your pergola more colours, you can combine it with climbing roses.



#### Passionflower

This is an exotic climber with beautiful purple and white flowers. It grows quickly and can cover the structure within a little time period. Don't worry if you live in colder regions as you can easily find its varieties that are cold resistant. This plant gives a fabulous look when combines with clematis.





## GRAPE VINE

This is one of the best plants that not only give your pergola shade and privacy but also give you juicy fruits. You can easily grow in any type of climate. Its different varieties are native to the Mediterranean, America, Central Asia, and Southwest Asia. You get a lot of options to choose your favourite variety from.

## WISTERIA

This is another popular plant famous for its beauty as a climber. However, it not only needs sturdy support but also requires maintenance to look at its best. Wisteria needs full sun to thrive.



## HONEYSUCKLE

This plant has beautiful flowers with a nostalgic fragrance that becomes stronger at dusk. There are more than 150 species of this plant and all of them are creepers. It is a large vine that grows quickly. If you want to cover your pergola in no time, this is a perfect climber for you.



# Garden Showcase of the Month

We get to work on some amazing projects and we thought we would share them with you. They can hopefully provide you with inspiration for your own dream garden.



## Luxury Access

Project Year: 2022

Location: Newark, Nottinghamshire



Our clients required a suitable access, for a mobility scooter, from their front door down to their drive. Originally their front garden was on two levels, with steps joining them together, which was not practical.

When we first visited, the client had an idea of what they wanted, and so we created 2D and 3D designs to reflect the concept. Due to the position of their property, there is no traffic going past their door, so the front can be used as a garden area. Therefore, we wanted to ensure that they had a space that was not only practical for gaining access to the lower-level driveway but also an area they could sit in and enjoy.



Instead of a path straight from the door, through the middle, we created one that follows the side boundary of the garden, down to a middle level area, and then sweeps down to the drive. This path creates a frame for a central area, and the middle level provides another seating area that looks back to the house. The final part of the path is defined using vertical timbers along the curved edge.

The central area is the main focal point, with a natural water feature. The rise in levels enabled us to create a flowing rill effect which starts from the top of the path down into the main pool, which is level with the bottom of the path. A variety of sizes in stones and

boulders have been used, along with low-maintenance planting. As the planting establishes this water feature will have more of a natural look.

Along the property boundary, we installed slatted fencing which adds a contemporary feel, but also the colour compliments the CEDEC® gravel path.

At the top of the path, outside the front door, is another zone where they can sit and enjoy the water feature. Between the top seating area and the water feature are raised beds with planting that provides colour and scents. Finally, the new steps mean that this is still an option to gain access to the property or driveway.







# Ed's Thoughts!

## HOW TO DECIDE ON THE BEST PATIO FOR YOUR GARDEN

You can convert any garden, no matter how big or little, into an extra living space by combining eye-catching paving with a creative design and high-quality expert installation. As a result, your home will be an oasis for you to enjoy this year. In today's market, however, there are so many options for paving that choosing the ideal one for your garden may be difficult.

### The Use Of Internet Search

To get started, do some internet research. You may get inspiration by doing a Google picture search or by visiting the websites of paving manufacturers. In addition please look at our website to see our work and get some inspiration.

### Visit Local Merchants

Pay a visit to the local merchants that sell building materials and supplies. The local builder's merchant is also a fantastic resource. Many of them offer showrooms where you can view a variety of paving materials being used to construct tiny patios. As well as seeing various kinds of pavement first-hand, you'll have a better understanding of how your final choice of paving will fare over time



### Picking The Right Colour

When it comes paving colour there are many to choose from. You may want to complement or contrast the colour scheme of your home. You'll also want to think about how much direct sunshine your patio gets. A light-coloured paving is recommended in gloomy areas since it would improve the ambiance. There is no right or wrong way to contrast or complement your home's exterior features.

### Try To Fit In With Your Garden

You should also think about your property's location and architectural style. If your house is older then antique, or riven-style paving may look better on your patio since it will give it a more cottage garden or stately home feeling. It's best to choose more modern-looking paving, such as porcelain, for more contemporary homes. Also if you have a small space then consider a circle design as these can be various sizes and doesn't create a block of paving that can be too much for a small area.

### Imagine Flow

Choosing outdoor paving that complements your inside tile decor has grown more fashionable in recent years. It is possible to create an indoor-outdoor flow by using a matching paving slab or tile throughout the space. We did a garden where they had Moroccan style tiles in the kitchen and so we reflected this in the garden by using patterned paving for their patio. You will have seen this in last month's magazine.

### Natural Stone Or Man-made?

Natural stone's allure lies in the fact that each slab is a one-of-a-kind creation. To give your patio a more natural appearance, choose a variety of colours.



# Maintenance Matters

## Attractive Drainage Solutions



Like many non-standard forms of drainage system, channel drains – sometimes known as ACO drains after the most common brand name – can be extremely useful in the right circumstances, providing a uniquely effective way of removing wastewater from hard standing areas, as well as other paved or concrete-covered surfaces.

They are a specific type of floor-based drain, consisting of a thin channel and a removable grating system placed over the top. These types of drain are commonly seen running along paved, tarmac and concrete-covered areas, which would otherwise be impermeable and prone to flooding. Channel drains are relatively easy to

install, with no complicated layouts and couplers needed, and can be designed to aesthetically complement the surrounding paved or tarmacked area.

Channel drains offer a number of benefits compared to alternative methods of drainage. Rather than installing a series of point drains across the area, which often results in overflows and ponding, channel drains can provide a higher water-carrying capacity and can help to prevent flooding on your property, even under heavy rain conditions, simply taking the water away straight to soakaways.

Over time, channel drains can become clogged and blocked with soil, silt, leaves and other debris, as a consequence of their open design. This can gradually reduce the effectiveness of the drainage, meaning the area will be more prone to overflows and flooding unless they are regularly cleaned. Channel drains are designed to be relatively straightforward to maintain, with grates that can be easily removed with keys, bolts or locking systems. By carefully removing the relevant grate, it is often possible to remove any built-up debris or silt by hand or by flushing it out with water. An easy and attractive drainage solution to install with low maintenance upkeep. What could be better?





# Longer Lasting LOVE

When you think of Valentine's Day, what comes to mind? It's an age-old tradition that cut flowers are given on Valentine's Day, but with a shelf life of only five to seven days, they're quickly forgotten. The legacy of a flowering plant can last much longer, as when you give it, it's actually at the start of its life rather than at the end! Potted plants are so much more suggestive of permanent affection than a bunch of flowers, and on a purely matter-of-fact level, they give far better value for money and avoids our throwaway culture.

Cold loving cyclamen and hellebores both bloom for months and can temporarily live inside before being planted outdoors. Here's a few other ideas that will be well received by anyone who loves gardening or flowers in general.



## STEPHANOTIS

Stunning house-plants trailed around a wire to help release its perfume. Common in most garden centres, usually at this time of year, they can be found trained around heart shaped wire.

## MINIATURE ROSES

A classic Valentine's Day symbol is the rose. A potted rose will last much longer and eventually can be planted outside in the garden or kept in a container outside. Miniature roses tend to flower at this time of year too







## CAMELLIA

For something less obvious, try symbolic plants with a little card attached explaining them. White Camellias symbolise adoration, Pink Camellia symbolise a longing for someone and red Camellia symbolise love, passion and deep desire. These can either be bought in shrub form or as a standard tree.

## ORCHID

A rather raunchier plant choice could be an orchid. The name orchid is derived from the Greek word “orchis,” named by the ancient Greek botanist, Theophrastus, who thought that the fleshy under-ground tubers resembled the male anatomy.

Due to their namesake, orchids are associated with fertility, virility, and sexuality. These associations, coupled with their exotic appearance, have given them a long history of being associated with love, fertility and elegance throughout various cultures and time periods.



**With some plants having hidden meanings, pick wisely who you give which plant to!**



# Garden to Kitchen

## This Month's Recipe

### GARLICKY LINGUINE WITH CABBAGE & ANCHOVY

February might seem like one big chilly Tuesday, but look closer and it's a lot more action-packed than you'd think. There's Pancake Day and, like it or not, it's Valentine's Day too. This can be the perfect opportunity to cook and impress someone special or simply avoid those crowded restaurants. This seasonal recipe would work very nicely as a cosy dinner for two but could easily be bumped up if you're eating with friends.

PREP TIME: 10 MINS

COOK TIME: 15 MINS

SERVES: 4

#### Ingredients

- 400g linguine or spaghetti
- 1 small Savoy cabbage, cut into 1cm-wide slices
- 4 tbsp olive oil
- 5 garlic cloves, thickly sliced
- 50g can anchovy in olive oil
- large pinch crushed chilli flakes

#### For the crispy crumbs

- 1-2 tbsp olive oil
- 50g fresh white breadcrumb
- 4 tbsp finely chopped parsley
- 2 tbsp freshly grated pecorino or Parmesan



## Method

#### STEP 1

Cook the linguine in a large pan of boiling, salted water following pack instructions, adding the cabbage for the final 4 mins of cooking time.

#### STEP 2

Meanwhile, heat the oil in a very small saucepan and gently cook the garlic. As soon as it starts to turn golden, lift out with a fork and set aside – it's very important that the garlic does not brown or it will spoil the flavour of the oil.

#### STEP 3

Add the anchovies and their oil, and cook for 1-2 mins, mashing with a fork. Add about 150ml of hot water (take a ladle or two from the pasta pan) and simmer very gently until the pasta is ready.

#### STEP 4

To make the crumbs, heat the oil in a large pan and cook the bread and parsley, stirring frequently, for 5 mins until crisp and golden. Mix in the cheese.

#### STEP 5

Drain the pasta quite lightly and return to the pan. Add the anchovy sauce, garlic, chilli and plenty of black pepper. Toss well to combine, then divide between bowls, scatter with the hot crumbs and serve.



# Monthly Puzzle

Can You Find These 6 Words Relating To Pancakes This Month?

EGGS

FLOUR

LEMON

MILK

SUGAR

SYRUP


Y	O	I	D	F	O	C	Q	O	M	T	Z	R	E	N
A	M	P	L	Z	J	G	N	U	A	J	W	Z	L	O
B	R	D	M	Z	B	X	T	G	Z	U	M	D	M	M
P	N	F	Q	X	H	G	S	C	H	E	W	I	A	E
G	M	N	E	T	N	H	Y	M	Q	H	O	O	G	L
V	D	C	A	L	V	G	L	W	K	L	L	I	U	D
C	R	J	X	N	H	Y	Z	E	P	J	V	D	R	D
H	V	X	H	X	D	Z	R	A	G	U	S	J	N	F
R	Z	U	N	S	M	K	Y	I	Q	S	E	A	D	D
C	Z	E	C	F	D	T	L	E	I	S	G	O	T	C
A	S	Y	G	Y	L	S	Y	I	Y	J	G	N	T	V
R	P	T	E	F	T	O	T	R	M	A	S	R	B	J
D	D	Q	C	P	L	U	U	X	N	A	S	W	S	G
G	H	O	Q	X	H	P	F	R	O	S	T	X	M	C
A	T	L	O	I	Q	Z	X	U	F	M	G	U	A	Q






# Contact Us


If you are looking for a landscaper who can transform your garden, get in touch with Fullers Landscaping now.


 01522 868717

 [landscapinglincolnshire@gmail.com](mailto:landscapinglincolnshire@gmail.com)

You can also find us on social media

 <https://www.facebook.com/fullerslandscaping>

 <https://www.instagram.com/fullerslandscaping>

 <https://www.youtube.com/@fullerslandscaping>

**Registered Company Number: 11493946**

**Name: Fullers Landscaping Limited**

**Address: 1 Elder Close LINCOLN LN6 9NS**

“

The whole experience, from the initial design, through to the completion of our garden, has been excellent. A big thank you to all involved, the Designer, the Project Manager, the team of Landscapers & the Admin, everyone have been friendly, helpful, & nothing has been too much trouble. An excellent team who have delivered a great garden within the timescale indicated. We would have no hesitation in recommending Fullers to anyone considering landscaping their garden

”